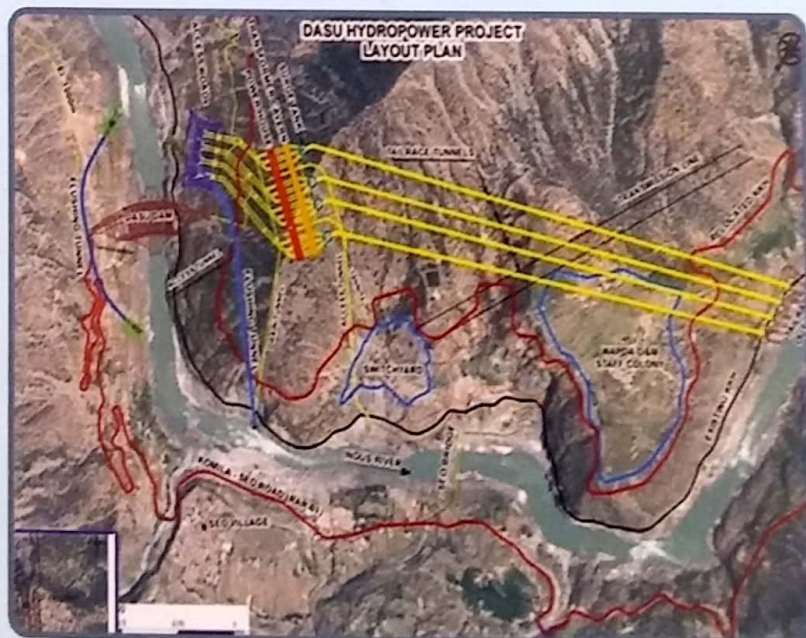




DASU HYDROPOWER PROJECT PROJECT



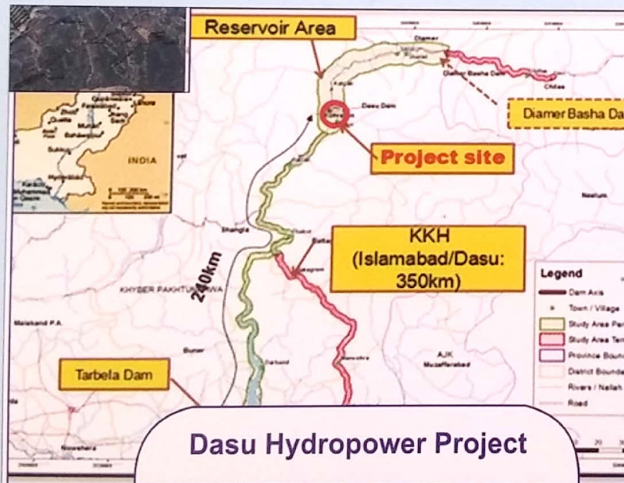
WATER & POWER DEVELOPMENT AUTHORITY (WAPDA)
PAKISTAN

INTRODUCTION

Dasu Hydropower Project is a run of river project on the Indus River located 7 Km upstream of Dasu Town, District Kohistan (Khyber Pakhtunkhwa). The site is 74 Km downstream of proposed Diamer Basha Dam site and 350 Km from Islamabad.

The main objective of Dasu Hydropower Project is expansion of energy generation capacity by exploiting hydel potential of the country, available on rivers to reduce load shedding and overcome energy crisis without which the important agriculture and industrial sectors cannot flourish.

The Project will generate 4320 MW (12 Units @ 360 MW each) with annual energy of 21445 GWh. It will be developed in two (02) Stages (Stage-I & II). The project is financed by the World Bank and is one of the priority projects under the Power Policy 2013 and the Vision 2025 of Government of Pakistan.



PROJECT SITE MAP

SALIENT FEATURES

S. NO	Description	Features
1	Dam Type	RCC (Gravity)
2	Installed capacity	4320 MW (12 Units @ 360 MW each)
3	Annual Energy	21445 Gwh
4	Design Discharge	2600 m ³ /sec
5	Maximum Gross head	184 m
6	Dam height	242 m
7	Height above sea level	957 m
8	Crest Length	570 m
9	Reservoir Length	74 KM
10	4 Nos. Headrace Tunnel Length	0.6 Km
11	4 Nos. Tailrace tunnel	2.1 Km

MAJOR COMPONENTS

Dasu Hydropower Project has the following main components:

- A 242m high arch dam, underground powerhouse and ancillaries.
- Staff offices and residential complex, and allied facilities.
- 81 Km RAR on right bank of river and 62 Km long stretch of the Karakoram Highway (KKH).
- 39 Resettlement villages will be developed for affected communities.
- 45 KM long 132 KV transmission line from Dubair Khwar to the Project Site.
- One 350 km long 765 KV double circuit transmission line for power evacuation from the power house.

PROJECT IMPACTS

S.NO	Description	Units	Quantity
1	Total Affected Land	Hectare	4643
2	Total Affected Villages	Number	35
3	Total Project Affected Persons	Persons	6953
4	Total project affected household	Household	767
5	Project affected household losing housing structures	Household	767
6	Project affected household losing agricultural land	Household	600
7	Total affected Trees	Number	21000
8	Affected household losing businesses/ Commercial structure	Household	76
9	Soniwals (Peoples extracting gold from the river's sand) Losing Livelihood	Number	13

Communication Section
Social & Resettlement Unit

Phone: 0998-407300

Email: sruwapda@gmail.com